

Introduction

The Berwick Area YMCA Child Care Center was established to meet the ever growing need for quality child care. Here, children ages 6 weeks to 5 years receive the best possible care in a warm, loving atmosphere. Our Child Care Centers offer a safe, secure, child oriented environment that address the intellectual, emotional, social and physical needs of infants, toddlers and preschoolers.

Child Care Policies

Hours of Operation:

The YMCA Child Care is open from 6:30 am-5:30 pm Monday through Friday— all year round. Child Care is officially closed on the following days: New Years Day, Good Friday, Memorial Day, July 4th, Labor Day, Thanksgiving, and Black Friday. We close at 1:00 pm on Christmas Eve and New Year's Eve.

Enrollment:

Infants: 6 Weeks–12 months

Young Toddlers: 13 months–24 months

Older Toddlers: 25 months-36 months

Preschool: 3 years-5 years

What you will need:

- A crib sheet and blanket for naptime
- Diaper changing needs
 - Diapers
 - Wipes
 - Creams/ointments
- Full change of clothes
- Sneakers or rubber soled shoes in order to prevent accidents in the gym or playground

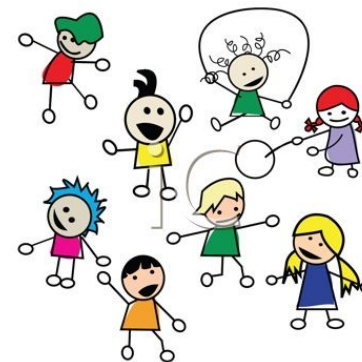
Berwick Area YMCA
231 W. Third Street
Berwick, PA 18603
www.berwicky.org

Katie Knight Child Care Director
daycare@berwicky.org
570-752-5981



FOR YOUTH DEVELOPMENT
FOR HEALTHY LIVING
FOR SOCIAL RESPONSIBILITY

Berwick YMCA Child Care and YCareII



Daily Activities

Using the Pa Early Learning Standards, your child will be offered opportunities to make choices, provided with ample opportunities for creative expression, allowed the freedom to explore their environment, permitted to get messy during play, and encouraged to work independently. We value children's ideas and promote problem solving by encouraging them to see tasks through completion. By using these methods the YMCA can reinforce early positive growth.

Registration Fee:

A \$25.00 non-refundable, non-transferable registration fee is required for participation in this program, you will not receive this payment back in cash nor credit once paid. It does not go toward your regular monthly tuition payment. This holds your child's spot until you start. Infant registration requires a 50% deposit of the monthly tuition to hold the spot.

Tuition:

Prices do vary according to the child's age. Call for a quote for your child's specific age group. Payments are to be made on a monthly basis. Payments are due on the 25th of the month and are required for all days that your child is scheduled rather than days that your child attends. Each family is allowed up to 2 weeks vacation time each calendar year.

Our Staff

We have a dedicated, enthusiastic well trained staff of professionals:

- Care about your child's well being
- Certified in First Aid and CPR
- Exceed requirements of Department of Human Services
- Receive ongoing training in education, health and safety
- Have ChildLine, FBI and Child Abuse clearances

Our Centers

- Loving, caring learning environment
- PA Early Learning Standards
 - Gym, Art and Music
 - Circle time activities
 - Fine Motor skill activities
 - Outdoor playground
 - Field trips
- Licensed through DHS

Meals:

Families are responsible for providing a nutritious lunch for their child including juice or milk. Each classroom is equipped with a microwave and refrigerator. Please label all items in your child's lunch, The center will provide a morning and afternoon snack.

Drop off & Pick Up

All children must be signed in and out by a parent or guardian every day per DHS regulations. Children will only be released to those persons on their release form. A drivers license will be required for any pick-up person listed. All children must be picked up by 5:30 pm to avoid the \$1.00 a minute late fee.

Health Policy

A current health care form must be kept on file for all children enrolled in the center. Physicals must be completed annually to maintain enrollment and all immunization records must be kept up to date. New applicants have 30 days to bring in a completed health care form.

Right to Dismiss

We reserve the right to withdrawal any child from the program if, at the Y's discretion, the enrollment of the child negatively affects the integrity of the program and/or the Y's legal obligations through and under the Pa Department of Public Welfare. We reserve the right to withdraw a child for non-payment of fees agreed upon, repeated failure of parents to pick up child on time, failure to provide program with forms or current medical information as stipulated by state licensing, continuous disciplinary problems, and hostility by parents towards Y staff or volunteers.

